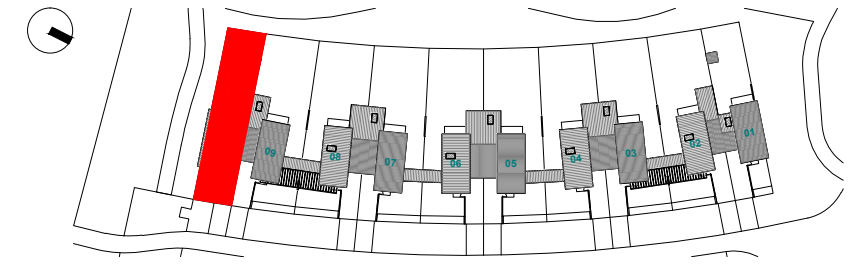
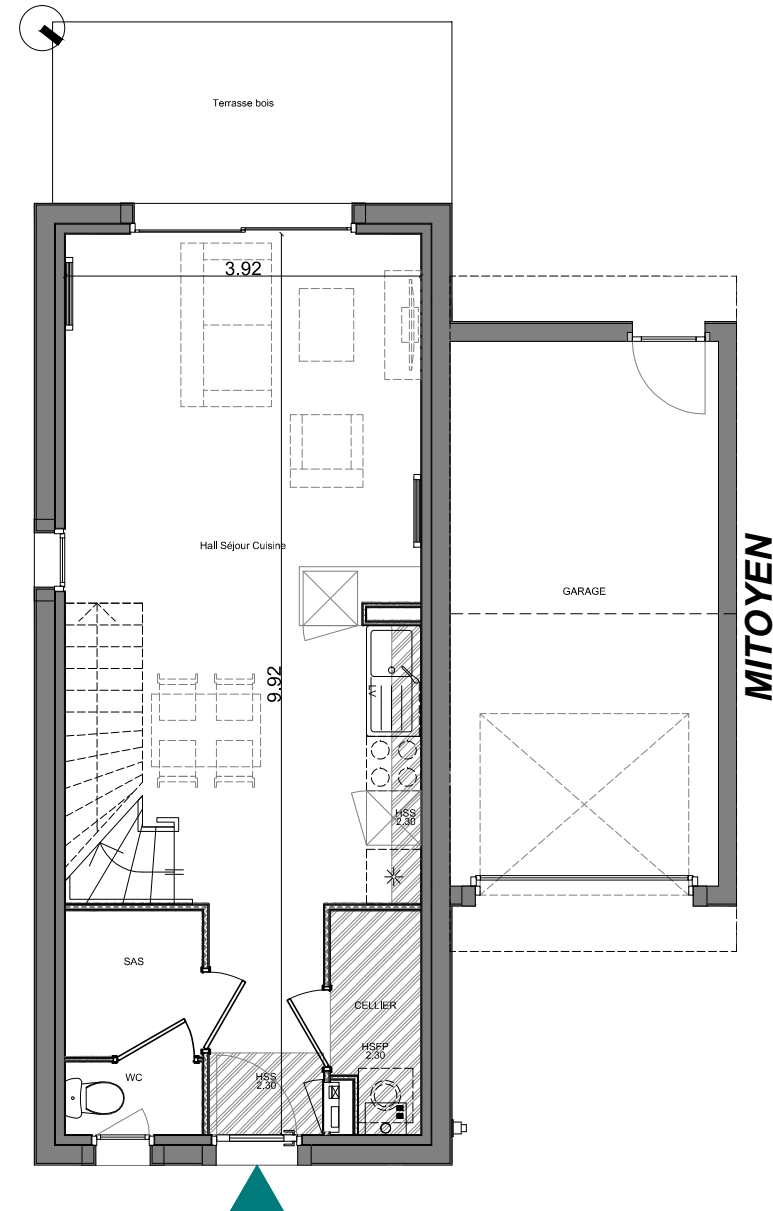


VILLA 10



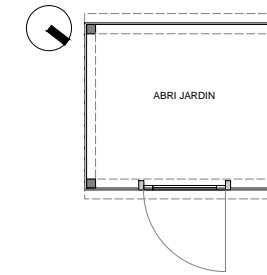
RDC



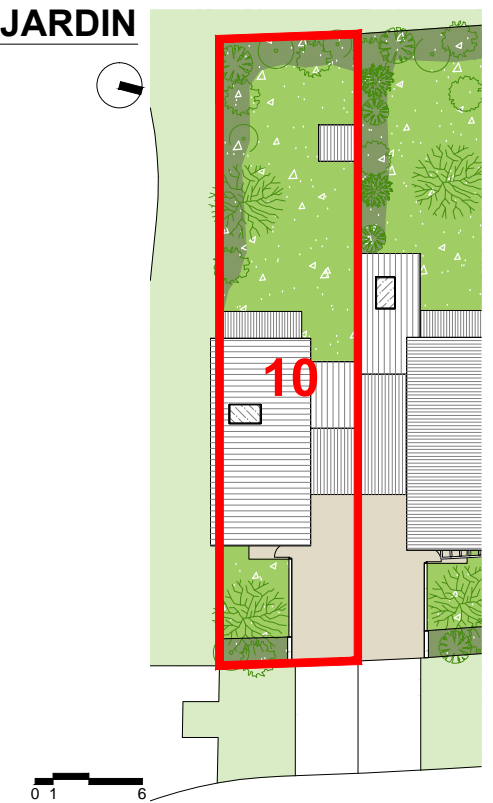
R+1



ABRI JARDIN



JARDIN



SURFACES HABITABLES

PIECES	SURFACES (m ²)	
	T3	
HALL - SEJOUR - CUISINE	29,67	
SAS	2,44	
WC	1,21	
CELLIER	2,26	
CHAMBRE 1 + PL	13,68	
CHAMBRE 2	11,92	
DEGAGEMENT	4,06	
SDB	4,82	
TOTAL HABITABLE	70,06	

GARAGE	17,73
TERRASSE	8,80
ABRI DE JARDIN	3,60
ACCES	37,00
JARDIN*	150,00

* y compris talus, hors terrasse, abri de jardin et accès (environ)

